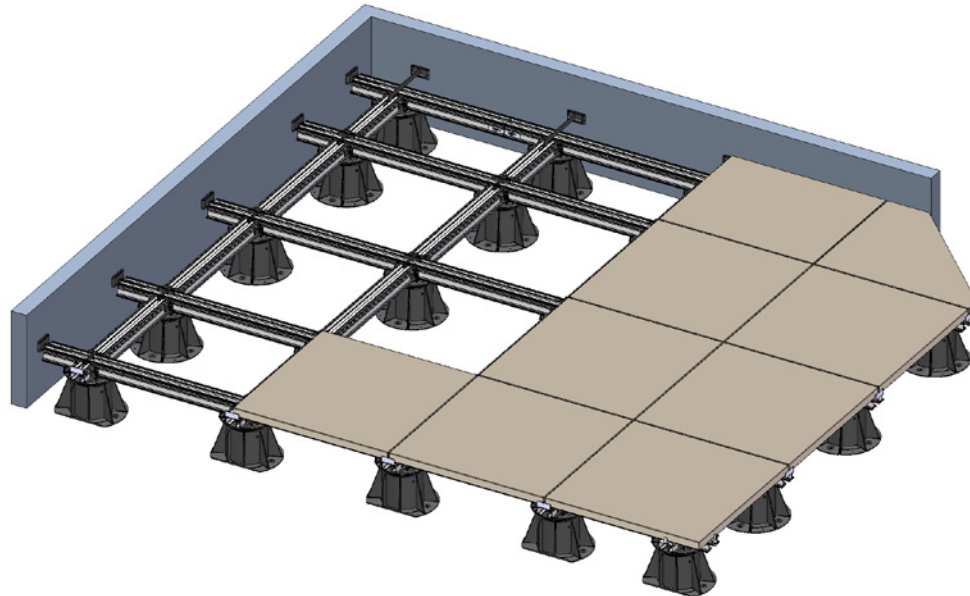




# VersiJack® Aluminium Joist

The VersiJack® Aluminium Joist is developed for use with VersiJack® height-adjustable pedestals to create a substructure for raised paving system. It allows for an increased level of versatility and stability in the arrangement of floor pavers.



The VersiJack® Aluminium Joist allows easy accessibility to waterproofing membranes and concealed services without affecting the alignment of the floor caused by improper handling during routine maintenance. An array of engineered accessories allows virtually unlimited configurations to secure the flooring seamlessly, to achieve the desired design and allow full edge support for pavers.

The joists are typically laid in a chequered arrangement to support the pavers on pedestals. They are first laid parallel to each other and locked to the pedestals using Joist Adaptors. Additional joists are laid perpendicularly and secured to the parallel joists using Perpendicular Joist Joiners.

Where required, joists are joined to each other in a straight line or at varying angles with stainless steel Side Joist Joiners to construct non-rectangular floor designs.

Thermoplastic rubber strips on the top surface of the joists provide sound and vibration dampening as well as minimize movement of pavers.

For a complete installation, proprietary Joist Spacer Tabs, Side/End Wall Spacers, and End Restrainers should also be employed.



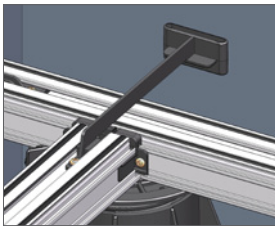
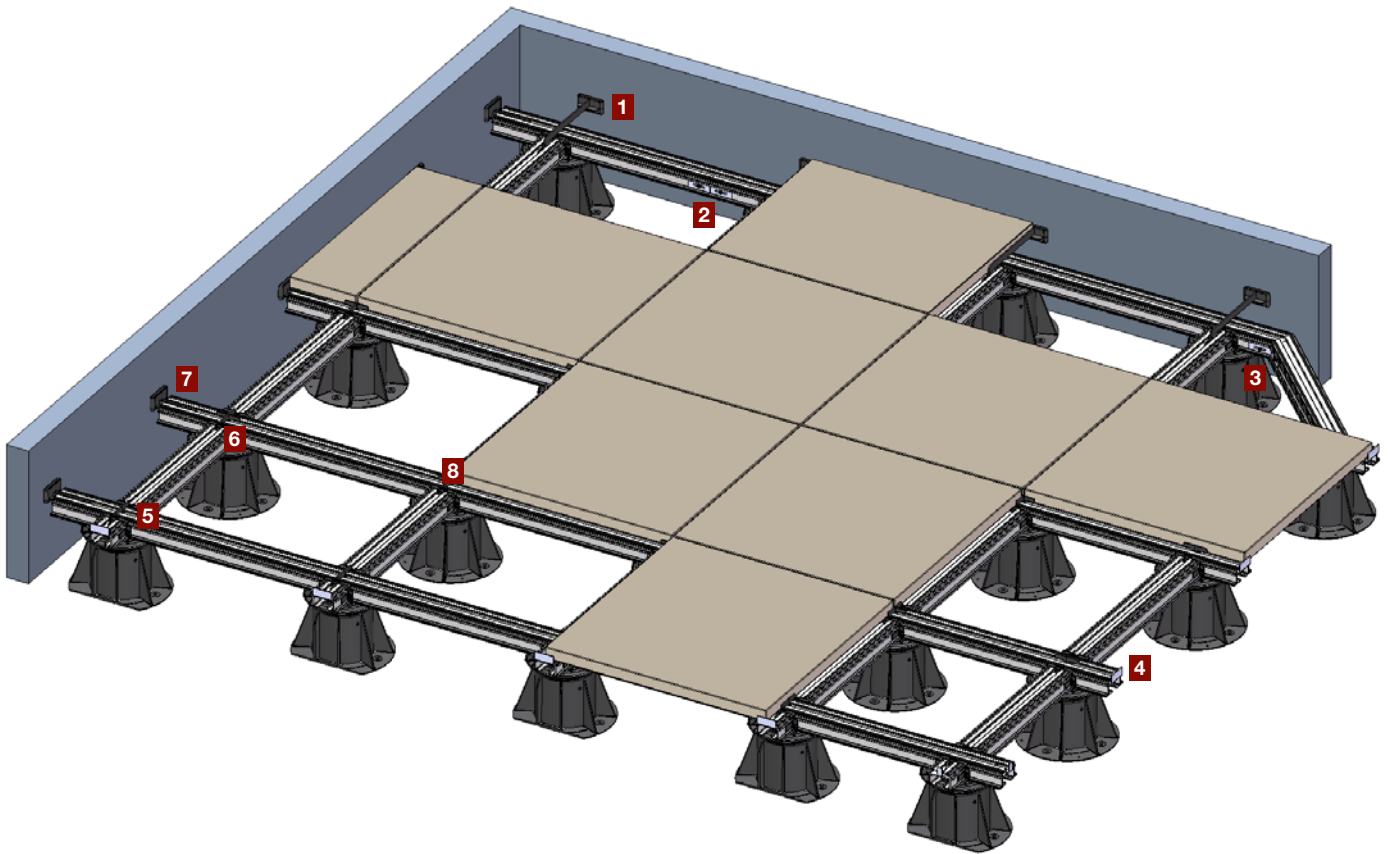
VersiJack®  
Aluminium Joist



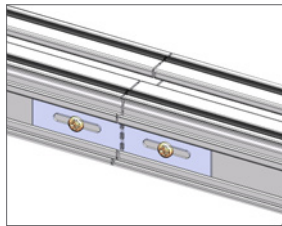
Joist Adaptor



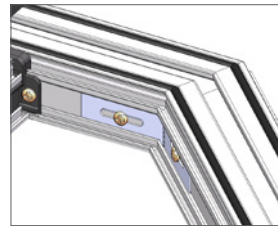
VersiJack®



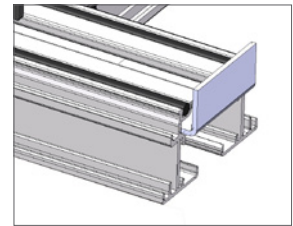
**1** Side Wall Spacer



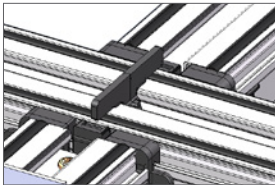
**2** Side Joist Joiner (straight joint)



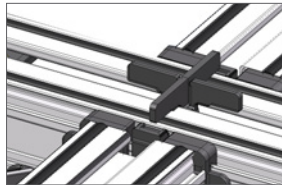
**3** Side Joist Joiner (angled joint)



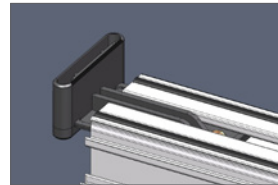
**4** End Restrainer



**5** Joist Spacer Tab with 2 posts (2 removed)



**6** Joist Spacer Tab with 4 posts (original)



**7** End Wall Spacer



**8** Perpendicular Joist Joiner

## Accessories



Side Wall Spacer



End Wall Spacer



End Restrainer



Side Joist Joiner



Joist Spacer Tab



Perpendicular Joist Joiner



The Elmich security hologram ensures authenticity of the products.

Distributed by: **Tileworks.**

0800 688 788 | tileworks.co.nz

**Note:** The information provided in this brochure is based on current knowledge and experience and does not infer any legally binding assurance or warranty, expressed or implied. Intending purchasers should verify whether any changes to specifications or applications or otherwise have been made since the issue of this literature. Environmentally-friendly recycled materials are used in product manufacture wherever possible. Physical product properties including colour may differ due to source of raw materials used. Colour may also fade due to UV exposure. All components of the product are designed for specific application, design calculations and any variation and/or deviation therefrom shall be the responsibility of the specifier and/or user.



**ELMICH PTE LTD** [www.elmich.com](http://www.elmich.com)

Singapore: (+65) 6356 2800

info@elmich.com

Singapore | Australia | Germany | Malaysia | Switzerland | USA



Management System  
ISO 9001:2015  
ISO 14001:2015  
ISO 22301:2012  
[www.tuv.com](http://www.tuv.com)  
ID 9105067487



© Elmich Pte Ltd AJ/001-V2-0818SG